

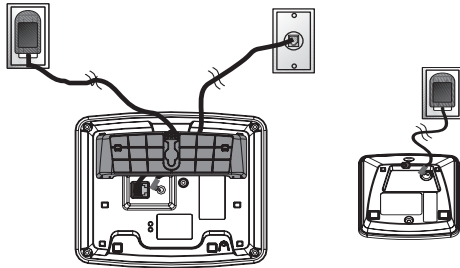


Quick start guide

for models ia5870/5878/5882

STEP 1 Connect power to telephone base and chargers then connect telephone line to telephone base

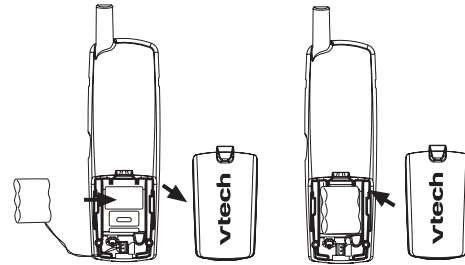
- Plug the connector into the power jack at the bottom of the telephone base and chargers then plug the power adapter into an electrical outlet not controlled by a wall switch.
- Plug one end of the telephone line cord into the telephone line jack at the bottom of the telephone base. Then plug the other end of the cord into the modular wall telephone outlet.



NOTE: Use only the power adapter supplied with your VTech telephone or equivalent.

STEP 2 Install the battery

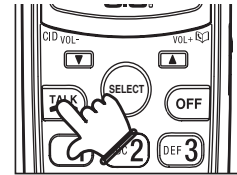
- Align the two holes in the plug with the socket pins matching the color-coded label in the battery compartment of the handset, then snap the plug securely into place.
- Place the battery in the compartment with the wires in the upper right corner.
- Position the battery compartment cover and slide it towards the unit until it clicks into place.
- For optimal performance, we recommend that you charge the handset for 16 hours. Note that the new battery may have enough charge for some calls.



STEP 3 Make, receive, and end calls

Make a call

- Press **TALK/FLASH** to ensure there is a dial tone, then dial the telephone number.



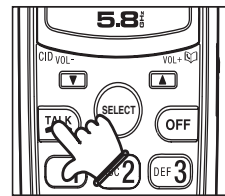
-OR-

For predialing:

- Dial the number (press **▼** to backspace, or press and hold **REDIAL/PAUSE** to insert a pause).

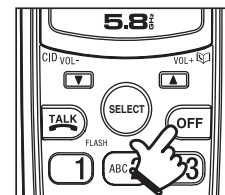
Receive a call

- Press **TALK/FLASH** or any dialing keys (0-9, #, *)



End a call

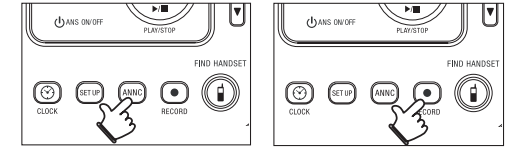
- Press **OFF**, or put the handset in the telephone base or charger.



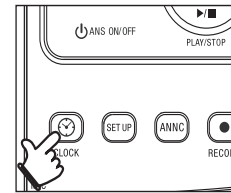
STEP 4 Set the answering system clock

- Press **CLOCK** to hear the current clock setting.
- Press **CLOCK** again to change the settings.
- Press **▶/SKIP** or **◀/REPEAT** to change the year, hour, minute or date.

When the correct setting is announced, press **CLOCK** to advance to the next setting.



NOTE: For complete feature instructions, please refer to your user's manual.

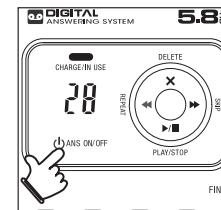


STEP 5 Turn the answering system on and off

The answering system must be turned on to function. If the answering system is turned off, the telephone base light will be off.

To turn the answering system on/off:

- Press **ANS ON/OFF** to select on or off.



STEP 6 Record outgoing announcement (optional)

The telephone is pre-set with the announcement "Hello, please leave a message after the tone." To replace the announcement with your own:

- Press **ANNC** and the system announces "Announcement, press **PLAY** or press **RECORD**."
- Press **RECORD** to record, and the system announces "Record after the tone. Press **STOP** when you are done."
- After the tone, speak towards the microphone at the front right of the telephone base from about nine inches away.
- Press **▶/PLAY/STOP** when finished and the answering system will automatically playback the newly recorded announcement.

STEP 7 Charge the battery

- The battery may have enough charge for a short call. For best performance, charge the battery for at least 16 hours.
- To charge the handset, place it in the telephone base or charger.
- The **CHARGE** light on the telephone base or charger will be on when the handset is properly positioned. See **Troubleshooting** in the user's manual if the **CHARGE** light is not on.

For installation and use of the belt clip and the wall mount bracket, please consult the user's manual.

IMPORTANT!

If your product is not working properly:

- Refer to the **Troubleshooting** section of your user's manual.
- Visit our website at www.vtechphones.com, or in Canada, www.vtechcanada.com.